

# Hand-held Megohmmeters

MODELS 6522, 6526, 6534 & 6536

## Insulation Resistance Testers with Multimeter Functions

- Selectable test voltages from (10 to 1000) V (model dependent)
- Insulation resistance measurement up to 200 G $\Omega$  (model dependent)
- Automatic discharge at the completion of the test
- Manual, Lock and Timer test modes
- PI/DAR ratio calculations (model dependent)
- Automatic test inhibition if live voltage above 25 V detected
- (20 or 200) mA continuity measurement with active protection without fuses (model dependent)
- Measures V (AC & DC), Hz,  $\Omega$ , k $\Omega$ , capacitance (model dependent)
- 600 V CAT IV

Our products are backed by over 130 years of experience in test and measurement equipment, and encompass the latest international standards for quality and safety.

Technical Hotline: (800) 343-1391  
[www.aemc.com](http://www.aemc.com)

 **AEMC**<sup>®</sup>  
INSTRUMENTS  
CHAUVIN ARNOUX GROUP



# INDUSTRIAL MAINTENANCE

## Models 6522 & 6526



(6526 only)

**Ideal for testing cables, motors, pumps, transformers and industrial equipment**



Model 6522

Model 6526



SCAN TO  
LEARN  
MORE



SCAN TO  
LEARN  
MORE



DataView®

### PRODUCT INCLUDES

**6522:** Soft carrying case, (2) 5 ft color-coded (red/black) leads, (2) color-coded (red/black) alligator clips, (1) black test probe, (6) AA batteries and user manual.

**6526:** Soft carrying case, (2) 5 ft color-coded (red/black) leads, (2) color-coded (red/black) alligator clips, (1) black test probe, (6) AA batteries, quick start guide, USB drive with DataView® software and user manual.



### FEATURES

- Simple-to-use, hand-held, compact and lightweight
- General purpose multimeter functions including voltage, frequency, resistance, continuity and capacitance (model dependent)
- Timed Test Mode up to 40 minutes for Insulation Resistance Test
- Polarization Index (PI) and Dielectric Absorption Ratio (DAR) Calculations (model dependent)
- 2 mA test current
- Frequency measurement: (15.3 to 800) Hz
- Voltage measurement range: (0.3 to 700) V

### Model 6526

- ΔREL function enables measurement of the difference between a reference value and new measured value
- Insulation resistance measurement from 10 kΩ to 200 GΩ
- Data storage allows comparison of results with previous test and report generation
- Conduct hundreds of 1-minute insulation tests on a single set of batteries
- Alarms with Green/Red Pass/Fail indicator light
- FREE DataView® software for configuring, real-time communication with a PC and report generation with pre-defined or user defined templates for use
- Bluetooth® (Class 2 wireless communication from up to 30 ft away)



CAT. #	DESCRIPTION
2155.51	Megohmmeter Model 6522 (Digital w/Analog Bargraph, (250, 500, 1000) V, Continuity, V)
2155.53	Megohmmeter Model 6526 (Digital w/Analog Bargraph, Alarm, (50, 100, 250, 500, 1000) V, Ohm, Continuity, V, kΩ, Capacitance, Memory, Bluetooth® w/DataView® software)

# TELECOM, ELECTRONICS AND SPECIAL APPLICATIONS

## Models 6534 & 6536



(6534 only)

**Ideal for insulation measurements on electronic components and circuits, Ethernet cables and other low voltage DC wiring**

### FEATURES

- Simple-to-use, hand-held, compact and lightweight
- (10 to 500) V insulation test voltage selection
- Insulation resistance measurement from 2 kΩ to 50 GΩ
- Nondestructive cable insulation testing for twisted pair cables and other sensitive conductors
- ΔREL function enables measurement of the difference between a reference value and new measured value
- FREE DataView® software for configuring real-time communication with a PC and report generation with pre-defined or user defined templates
- Bluetooth® (Class 2 wireless communication from up to 30 ft away)
- General purpose multimeter functions including voltage, resistance and continuity



DataView®



SCAN TO LEARN MORE



Model 6534

**Ideal for special applications in the aerospace and defense sectors for ESD testing where specific test voltages are required**

### FEATURES

- Simple-to-use, hand-held, compact and lightweight
- Variable test voltage selection from (10 to 100) V in 1 V increments
- Insulation resistance measurement from 2 kΩ to 20 GΩ
- Test the effectiveness of ESD flooring, walls, carpets, furniture, and other items
- ΔREL function enables measurement of the difference between a reference value and new measured value
- Test lead compensation eliminates lead resistance from continuity measurements
- General purpose multimeter functions including voltage, resistance and continuity
- Available in an optional ESD Floor Test kit (ESD Floor Testing for ANSI ESD STM 97.2)



SCAN TO LEARN MORE



**Electro Static Discharge (ESD) Floor Test Kit**  
CAT. # 2155.57



Model 6536

CAT. #	DESCRIPTION
2155.55	Megohmmeter Model 6534 (Digital w/Analog Bargraph, (10, 25, 100, 250, 500) V, Ohm, Continuity, V, kΩ, Memory, Bluetooth® w/DataView® software)
2155.56	Megohmmeter Model 6536 (Digital w/Analog Bargraph, Alarm, Variable (10 to 100) V, Ohm, Continuity, V, kΩ)
2155.57	Megohmmeter Model 6536 ESD Floor Test Kit



Technical Assistance (800) 343-1391



# SPECIFICATIONS

MODELS	6522	6526	6534	6536
<b>INSULATION TESTS</b>				
Test Voltages	(250, 500, 1000) V	(50, 100, 250, 500, 1000) V	(10, 25, 100, 250, 500) V	Variable (10 to 100) V (1 V steps)
Measurement Range:	<b>10 V</b>	–	2 kΩ to 1 GΩ	2 kΩ to 2 GΩ
	<b>25 V</b>	–	5 kΩ to 2 GΩ	5 kΩ to 5 GΩ
	<b>50 V</b>	–	10 kΩ to 10 GΩ	10 kΩ to 10 GΩ
	<b>100 V</b>	–	20 kΩ to 20 GΩ	20 k to 20 GΩ
	<b>250 V</b>	50 kΩ to 10 GΩ	50 kΩ to 50 GΩ	–
	<b>500 V</b>	100 kΩ to 20 GΩ	100 kΩ to 100 GΩ	–
	<b>1000 V</b>	200 kΩ to 40 GΩ	200 kΩ to 200 GΩ	–
Resistance • Ohm	–			(10 to 100) V • (1 V steps)
Measurement Range • Resolution	(2 <sup>(1)</sup> to 999) kΩ or (10 <sup>(1)</sup> to 999) kΩ and (1.000 to 3.999) MΩ • 1kΩ; (4.00 to 39.99) MΩ • 10kΩ; (4.00 to 399.9) MΩ • 100 kΩ; (400 to 3999) MΩ • 1MΩ; (4.00 to 39.99) GΩ • 10 MΩ; (40.0 to 200) GΩ • 100 MΩ			
Accuracy	± (3 % + 2 cts) <sup>(2)</sup> 2-999 kΩ: ± (4 % + 20 cts) <sup>(3)</sup> All Other: ± (3 % + 2 cts) <sup>(3)</sup>			
Test Voltage (I < 1mA)	0 % + 20 %			± 0.5 V
Test Voltage Accuracy	± (3 % + 3 cts)			
Test Current Display • Resolution	(0.01 to 39.99) μA • 10 nA; (40.0 to 399.9) μA • 100 nA; (0.400 to 2.000) mA • 1μA			
Test Current Accuracy	± (10 % + 3 cts)			
PI • DAR Ratios	–	Yes	–	–
Test Lock	Yes			
Timer (min:s)	(0 to 40) m			
Discharge Time (at 25 V)	< 2 s/μF			
Automatic Test Inhibit	If live voltage > 25 V detected			
Alarms	2 fixed thresholds + 1 programmable threshold			
<b>VOLTAGE</b>				
Measurement Range • Resolution	(0.3 to 399.9) V • 0.1 V; (400 to 700) V • 1 V			
Accuracy • Input Impedance	±(3 % + 2 cts) • 400 kΩ			
Operating Frequency	DC; (15.3 to 800) Hz			
<b>FREQUENCY</b>				
Measurement Range • Resolution • Accuracy	–	(15.3 to 399.9) Hz • 0.1 Hz • ± (1 % + 2 cts); (400 to 800) Hz • 1 Hz • ± (1 % + 1 ct)	–	–
<b>CONTINUITY</b>				
Measurement Range • Test Current	(0.00 to 10.00) Ω • (200 mA)	(0.00 to 10.00) Ω • (200 mA) • (0.0 to 100.0) Ω • (20 mA)		
Accuracy • Open Circuit Voltage	± (2 % + 2 cts) • ≥ 6 V			
Measurement Current	200 mA range: 200 mA (-0 mA + 20 mA); 20 mA range: 20 mA ± 5 mA			
Continuity Thresholds (Quick Beep)	2 Ω fixed	2 Ω, 1 Ω, programmable threshold		
Lead Compensation	up to 9.99 Ω			
<b>RESISTANCE</b>				
Measurement Range • Resolution • Accuracy	–	(0 to 3999) Ω • 1 Ω; 4.00 k to 39.99 kΩ • 10 Ω • ± (3 % + 2 cts) (40.0 to 399.9) kΩ • 100 Ω; (400 to 1000) kΩ • 1 kΩ • ± (3 % + 2 cts)		
<b>CAPACITANCE</b>				
Measurement Range • Resolution	–	(0.1 to 399.9) nF • 0.1 nF (400 to 3999) nF • 1 nF (4.00 to 10.0) μF • 10 nF	–	–
Accuracy	–	± (3 % + 2 cts)		
<b>GENERAL SPECIFICATIONS</b>				
Display	Backlit digital with bargraph			
Storage	–	1300 measurements		–
Communication	–	Bluetooth®, Class II (approximately 30 ft)		–
Power Supply	(6) AA Alkaline batteries			
DataView® Software	–	Included		–
Auto Power OFF	Yes			
Dimensions • Weight	(8.30 x 4.25 x 2.36) in (211 x 108 x 60) mm • 1.873 lb (850 g)			
IP Rating	IP54 • IK 04			
Safety Rating • CE Rating	IEC 61326 - 1 • IEC 61010 - 1 and IEC 61010 - 2 - 030, 600 V CAT IV			
Compliance With Standards	IEC 61557 parts 1, 2, 4 and 10			

(1) 2 kΩ for Models 6534 & 6536 (2) To be added: 10 V: 1 % per 0.1 GΩ; 25 V: 0.4 % per 0.1 GΩ, 50 V: 2 % per GΩ, 100 V: 1 % per GΩ; 250 V: 0.4 % per GΩ; 500 V: 0.2 % per GΩ; 1000 V: 0.1 % per GΩ  
(3) 10 % / U<sub>i</sub> is added per 100 MΩ

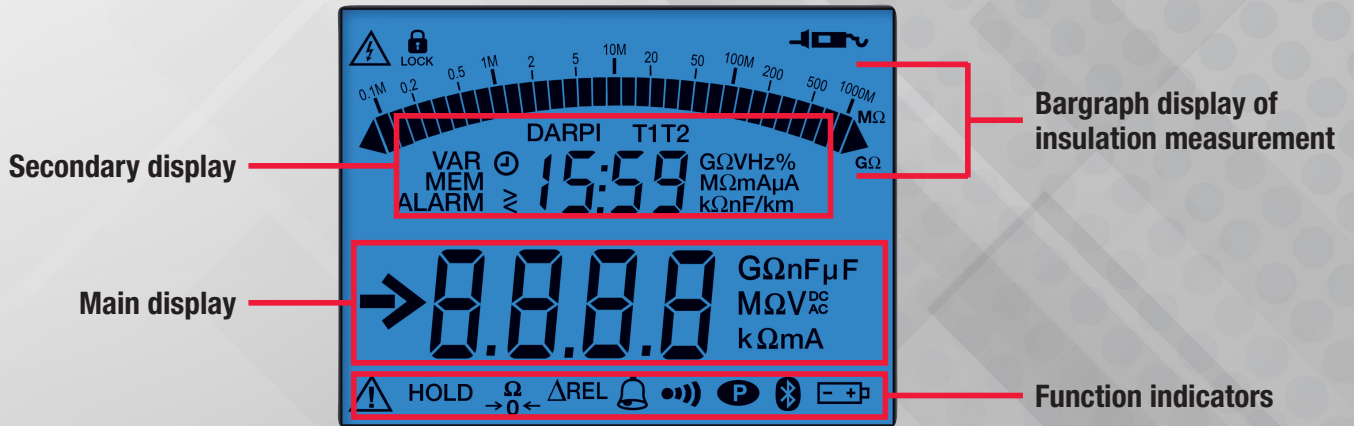


# HOW TO CHOOSE THE RIGHT MEGOHMMETER



MODELS	6522	6526	6534	6536
<b>Applications</b>	Industrial Maintenance • 480 V Motors • Transformers • Other Electrical Apparatus		Electronics • ESD • Communication Cable	
<b>Test voltage</b>	(250, 500, and 1000) V	(50, 100, 250, 500, and 1000) V	(10, 25, 100, 250, and 500) V	(10 to 100) V 1 V increments
<b>Range</b>	40 GΩ	200 GΩ	50 GΩ	20 GΩ
<b>Leakage Current</b>	-	✓	✓	✓
<b>Manual • Lock • Duration Modes</b>	✓	✓	✓	✓
<b>PI • DAR Ratios</b>	-	✓	-	-
<b>Alarms</b>	-	✓	✓	✓
<b>ΔREL</b>	-	✓	✓	✓
<b>Continuity</b>	✓	✓	✓	✓
<b>Voltage</b>	✓	✓	✓	✓
<b>Frequency</b>	-	✓	-	-
<b>Resistance</b>	-	✓	✓	✓
<b>Capacitance</b>	-	✓	-	-
<b>Magnetic Mounting</b>	-	✓	✓	✓
<b>Data Storage</b>	-	✓	✓	-
<b>Bluetooth® Communication</b>	-	✓	✓	-
<b>Remote Probe Compatible</b>	✓	✓	✓	✓
<b>Categories</b>	600 V CAT IV			
<b>Display</b>	Dual Line with Bargraph			

## Functional Display



# FRONT AND TOP PANEL (Model 6526)

## TOP PANEL

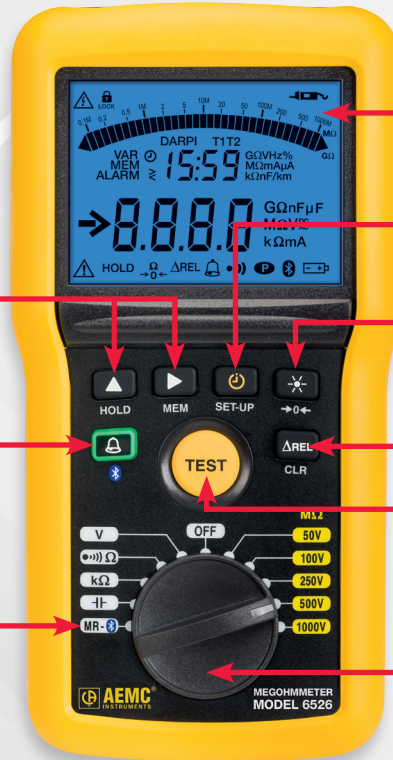


## FRONT PANEL

- Navigation Buttons:**
- Display instrument information
    - Turn buzzer ON/OFF
  - Turn power save ON/OFF
    - Program test time
  - Select displayed parameters
    - Program alarm set points
- Secondary Function:**
- Hold
  - Data storage

Alarm activation/  
Deactivation

Memory recall/  
Bluetooth® activation



Blue backlit LCD

Access to instrument information &  
set up/Timer activation

Test lead resistance  
compensation/Backlight

ΔREL set and compare multimeter  
measurements to a reference value

TEST button

Test function selection switch

*Note: Buttons & Functions are Model Dependent*

BUTTON	FUNCTION
	Select the LOCK, TIMER, PI or DAR functions
	Switch the display back lighting ON / OFF
<b>HOLD</b>	Freeze / unfreeze the measurement display
<b>SET-UP</b>	Configure user programmable functions
	Eliminate test lead resistance from continuity measurement
	<b>Models 6526, 6534 and 6536:</b> the ALARM button is used to activate / deactivate the alarms <b>Model 6526:</b> the ALARM button also has a two-color (green / red) indicator to indicate Pass / Fail conditions
	Select test time, voltage or test current results to show on the secondary display: <ul style="list-style-type: none"> <li>• Program test duration for insulation measurements</li> <li>• Choose (20 or 200) mA continuity test current</li> <li>• Program alarm thresholds for (Models 6526 and 6534)</li> </ul>
<b>ΔREL</b>	ΔREL button is used to display the measurement from which a stored reference measurement is subtracted (Models 6526, 6534 and 6536)
<b>MEM</b>	MEM button is used to store measurements (Models 6526 and 6534)
<b>CLR</b>	CLR button is used to erase stored measurements (Models 6526 and 6534)
	Activate / deactivate Bluetooth® wireless communication (Models 6526 and 6534)



# DataView®

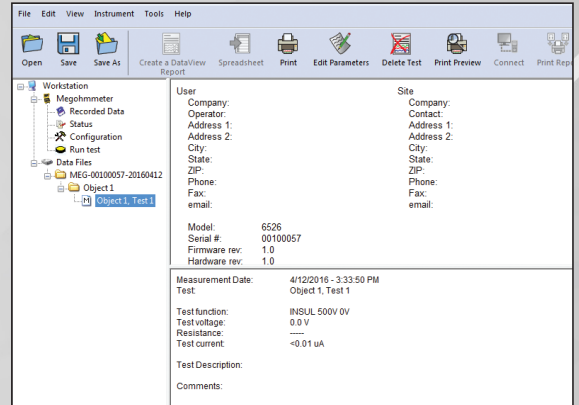
## Data Analysis & Reporting Software



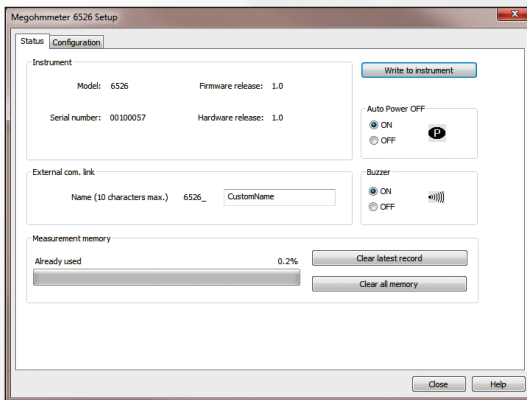
DataView® Software automatically recognizes the instrument when it is connected to the PC and opens the corresponding control panel. The tree structure menu offers users direct access to the data recorded in the instrument and its configuration.

### Other Functions Available:

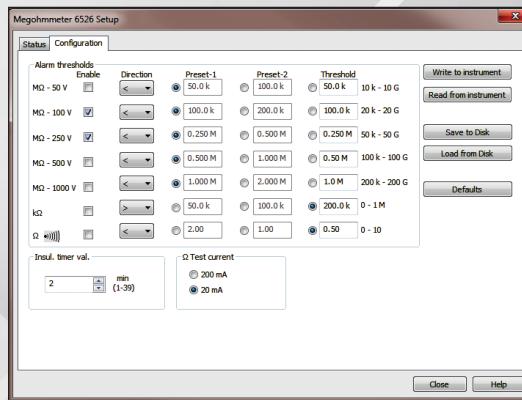
- Start and stop tests from your PC
- Real-time display of active tests
- DAR and PI ratio programming and display
- Graphical plot of the tests
- Generate reports from test results



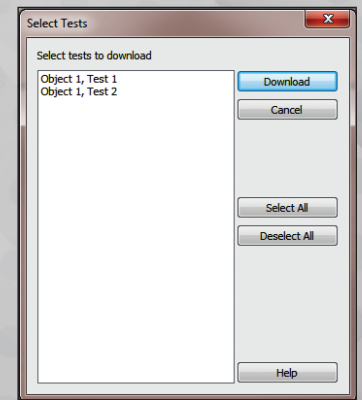
Tree structured status screen provides the ability to select connected instruments, configure instruments, see the instrument's status and review stored test results.



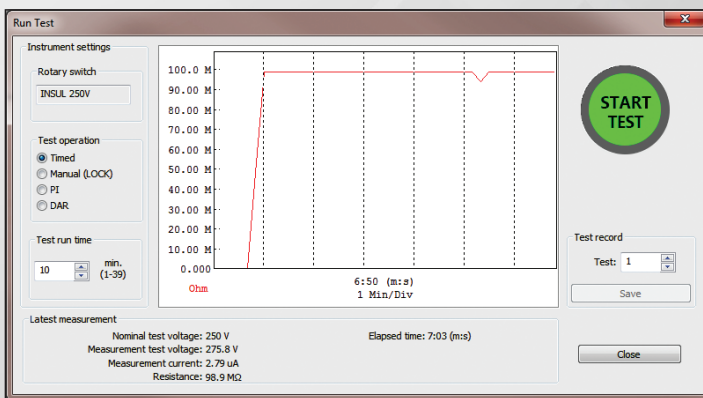
Status screen allows you to assign a unique name for the instrument and to check and clear memory as needed.



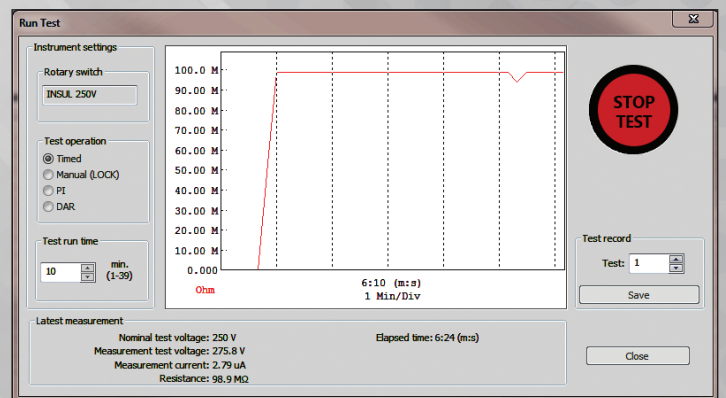
Configuration screen allows you to set alarm levels, test time and to read and write configurations from and to the instrument.



Select individual or multiple tests to download and review on your computer.



Select test conditions and start a test from the PC and display real-time measurement results graphically.



Stop a test in progress and display the test results.

**United States & Canada**

**Chauvin Arnoux<sup>®</sup>, Inc.  
d.b.a. AEMC<sup>®</sup> Instruments**

15 Faraday Drive  
Dover, NH 03820 USA  
Tel (603) 749-6434  
Fax (603) 742-2346

**Customer Support**  
Place orders, obtain prices  
and delivery options  
(800) 343-1391

[customerservice@aemc.com](mailto:customerservice@aemc.com)

**Sales & Marketing Department**  
[sales@aemc.com](mailto:sales@aemc.com)  
[marketing@aemc.com](mailto:marketing@aemc.com)

**United States & Canada (continued)**

**Repair & Calibration Service**  
[repair@aemc.com](mailto:repair@aemc.com)

**Technical & Product  
Application Support**  
(800) 343-1391  
[techsupport@aemc.com](mailto:techsupport@aemc.com)

**South America, Central America,  
Mexico & the Caribbean**

**Chauvin Arnoux<sup>®</sup>, Inc.  
d.b.a. AEMC<sup>®</sup> Instruments**  
15 Faraday Drive  
Dover, NH 03820 USA  
[export@aemc.com](mailto:export@aemc.com)

**Australia & New Zealand**

**Chauvin Arnoux<sup>®</sup>, Inc.  
d.b.a. AEMC<sup>®</sup> Instruments**  
15 Faraday Drive  
Dover, NH 03820 USA  
[export@aemc.com](mailto:export@aemc.com)

**All other countries**

**Chauvin Arnoux<sup>®</sup>**  
12-16 Rue Sarah Bernhardt  
92600 Asnières-Sur-Seine, FR  
Tel +1 33 1 44 85 45 85  
Fax +1 33 1 46 27 73 89  
[info@chauvin-arnoux.com](mailto:info@chauvin-arnoux.com)  
[www.chauvin-arnoux.com](http://www.chauvin-arnoux.com)



*Family of Products*

**Measure Up**  
WITH AEMC INSTRUMENTS<sup>®</sup>

To learn more, visit [www.aemc.com](http://www.aemc.com)

Call the AEMC<sup>®</sup> Instruments Technical Assistance Hotline for immediate consultation with an applications engineer: (800) 343-1391

AEMC<sup>®</sup> Instruments • 15 Faraday Dr. • Dover, NH 03820 USA • (800) 343-1391 • Fax (603) 742-2346 • E-mail: [sales@aemc.com](mailto:sales@aemc.com)  
Export Department: +1 (603) 749-6434 x520 • Fax +1 (603) 742-2346 • E-mail: [export@aemc.com](mailto:export@aemc.com)

950.BR-Hand-HeldMeg\_20241023 • Printed in the USA

© 2024 Chauvin Arnoux<sup>®</sup>, Inc. d.b.a. AEMC<sup>®</sup> Instruments