

2 Channel DC Voltage & Current Data Logger

Model L452



**Versatile, Powerful
& Cost Effective
Data Logger**

Programmable data inputs.

4 to 20mA_{dc}
±100mV, ±1V, ±10V_{dc}
Pulse
Event

User interface.

Front panel user
configuration
Real-time measurement
display
Remote user configuration

Wireless (Bluetooth) or USB communication.

**Comprehensive DataView[®]
software included**

Configure instrument
Download and store
measurement
Analyze data
Create reports



with terminals

Our products are backed by over 130 years of experience in test and measurement equipment, and encompass the latest international standards for quality and safety.

 **Technical Hotline: (800) 343-1391**
 **www.aemc.com**

 **AEMC[®]**
INSTRUMENTS
CHAUVIN ARNOUX GROUP

Ergonomic & simple to use,

Ideal for your industrial monitoring & recording applications

The image shows the AEMC Model L452 Data Logger, a handheld device with a green terminal block at the top and a large LCD screen. The screen displays two channels of data: Channel 1 at 145.6 GPM and Channel 2 at 918.2 PSI. A yellow callout box highlights the screen content. To the right of the device, several indicators are shown with dashed lines pointing to the screen: Battery life indicator, Alarm indicator, Remote mode indicator, Bluetooth indicator, Memory usage, Channel 1 measurement data, and Channel 2 measurement data. The device has two input ports labeled INPUT 1 and INPUT 2, each with a 30V MAX rating and a ground symbol. The AEMC logo and 'DATA LOGGER MODEL L452' are printed on the device's face. The screen also shows icons for battery, alarm, Bluetooth, and memory usage.

The L452 data logger is equipped with two programmable inputs which allow you to connect to a wide variety of sensors, transducers and pulse inputs. DC voltage, DC current, pulse and contact closure inputs are selectable. Scales and units of measure are programmable to match the application.

Multiple data input types.

The L452 can log DC voltage, DC current, pulse, or digital (on/off) data, using either one or two programmable inputs. Measurements can be performed directly on the instrument, or through a variety of sensors. This data is stored in the instrument's large 32MB internal Flash memory. Scale values and units of measure are also programmable.

Expanded user interface.

You can set up the instrument and view real-time measurement data on the LCD screen.

The L452 features an on-board menu-based interface for navigating measurement data and selecting configuration options.

Enhanced DataView® support.

The instrument connects to a PC using either *Bluetooth* or USB. Logged data can be downloaded, analyzed, and formatted into reports using the *DataView*® software. The *DataView*® Control Panel enables the ability to change settings on the instrument, view real-time measurements, schedule recording sessions, and perform other configuration tasks.

The Model L452 includes two user-selectable modes of operation:

- Local mode provides setup and measurement data display through the instrument's front panel. In Local mode, you can select configuration settings, start and stop a recording session on the instrument, and view measurements in real time.
- Remote mode controls the L452 from your PC. You can connect the instrument directly to a PC and then work with it through the *DataView*® Control Panel. Remote mode provides functionality not available in Local mode, such as viewing and analyzing the results of a recording session.

wireless data logger.

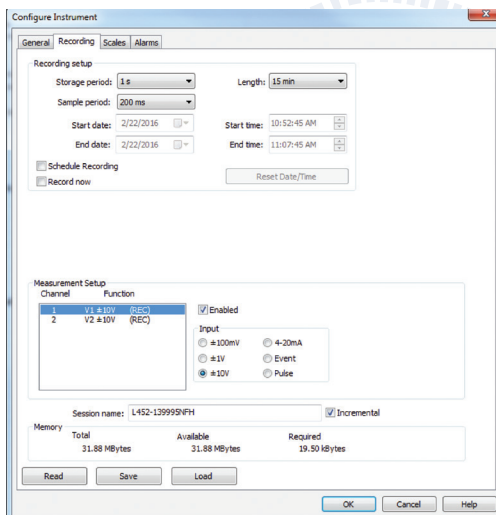
ELECTRICAL	MEASUREMENT RANGE	RESOLUTION	ACCURACY (% OF READING)	MAX SAMPLING RATE
DC Current	4 to 20mA	0.01mA	±(0.25% of reading + 0.05mV)	5 samples/s
DC Voltage	±100mV	0.1mV	±(0.5% of reading + 0.1mA)	5 samples/s
	±1V	1mV	±(0.5% of reading + 1mV)	
	±10V	10mV	±(0.5% of reading + 10mV)	
Pulse	±10V	N/A	N/A	100 samples/s
Event	±10V	N/A	N/A	16 samples/s
Pulse Voltage				
Battery Life				
Power Supply	3.3V (with 1MΩ pull-up)			
Recording Mode	Power OFF: 270 days			
Control	200ms acquisition, display on: 18 days			
Sample Period	200ms acquisition, display off: 36 days			
Storage Period	1 min. acquisition, display off: 270 days			
Recording Length	110 to 240V (50/60Hz) – External: via USB connector – Internal: rechargeable NiMH batteries, 2.4V (2 x 1.2V)			
Data Storage	Start/Stop (stop when memory full or when the session end date is reached)			
	Local mode (keypad on front panel) – Remote mode (control via PC)			
	200mS to 1 minute selectable			
	200mS to 1 hour selectable			
	10 minutes to 1 year selectable (capable of recording 2 channels @ 1/minute for > 1 year)			
	32 MB (up to 16 million measurements)			
MECHANICAL				
Communication	USB 2.0, Bluetooth 2.1, Class 1 (up to 300 ft (100m))			
Dimensions	1.28 x 2.58 x 4.92" (32.4 x 65.5 x 125mm) (5.41" (137.5mm) with screw connector)			
Weight	7oz (200g)			
Display	LCD 128 x 64 pixels			
Input Terminal Strip	6 screw removable terminals strip			
Operating Temperature	32 to 122°F (0 to 50°C)			
Protection	IP42 (IP20 with terminals)			
Electrical Protection	IEC 61010-1 Ed. 3/IEC 61010-2-030 Ed. 1			

DataView® Data Analysis and Reporting Software

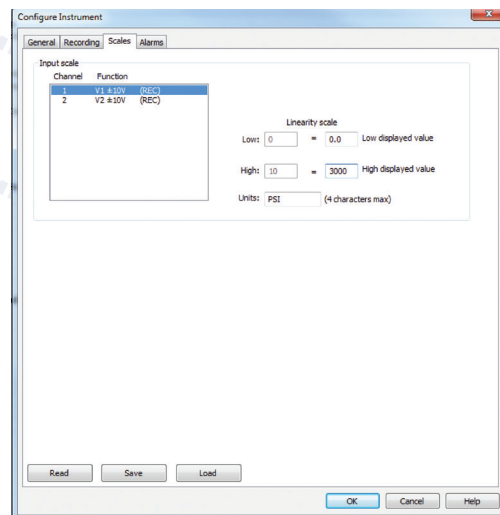


Easy to download and view data!

- Display and analyze real-time data on your PC
- Configure all data logger functions and parameters from your PC including sample rate, recording length, channel configuration and more
- Create and store a library of configurations that can be uploaded to the logger as needed
- Pan and zoom through sections of the graph to analyze the data
- Display waveforms, trend graphs and text summaries
- Print reports using standard or custom templates you design
- Free software upgrades are available on our website www.aemc.com



Recording Tab provides for sample and storage rate selections as well as recording length and schedule. The input measurement type can also be selected.



Scaling can be programmed to include lower and upper values and units for each channel

DESCRIPTION

Data Logger Model L452

CATALOG NO.

2153.51



Technical Assistance (800) 343-1391

www.aemc.com 3

PRODUCT INCLUDES

Data Logger
with six-pin removable terminal strip



120V Wall Plug to USB
Cat. #2153.78



USB (6 ft)
Cat. #2138.66



USB Stick
with User Manual and DataView[®] Software



Quick Start Guide



2 NiMH batteries



OPTIONAL ACCESSORIES

Wall mount holster
Cat. #2153.61



Desk stand
Cat. #2138.62



Multifix mounting system
Cat. #5000.44



TEST & MEASUREMENT INSTRUMENTS
Cable Testers
Clamp-On Meters
Current Measurement Probes
Data Loggers
Digital Multimeters
Electronic Test Tools
Environmental Testers
Ground Resistance Testers
Leakage Current Meters & Probes
Megohmmeters
Micro-Oscilloscopes
Power/Energy Quality Analyzers, Meters & Loggers
Test and Measurement (T&M) Instruments
Thermal Imaging Cameras
Transformer Accessories

GROUND RESISTANCE TESTERS
For all of your Ground Integrity[®] Testing needs...

POWER QUALITY
Solve all your Power Quality Needs...

MEGHOHMETERS
Solve all your Insulation Testing needs...

Multi-purpose Clamp-On Meters
Budget & Accuracy Dependable & Safe Affordable & Easy to Use
Clamp-on meters are designed and constructed to provide safe and accurate performance in the most demanding applications. They feature the most advanced performance and safety features available.

VOLUME 23
WWW.AEMC.COM
TECHNICAL HOTLINE: (800) 343-1391

...are backed by over 130 years of experience in test and measurement and encompass the latest international standards for quality and safety.
Hotline: (800) 343-1391

...are backed by over 130 years of experience in test and measurement and encompass the latest international standards for quality and safety.
Hotline: (800) 343-1391

...are backed by over 130 years of experience in test and measurement and encompass the latest international standards for quality and safety.
Hotline: (800) 343-1391

AEMC INSTRUMENTS
CHAUVIN ARNOUX GROUP

Family of Products

THE SMART CHOICE

FOR ELECTRICAL TEST & MEASUREMENT INSTRUMENTS

To learn more, visit www.aemc.com

Call the AEMC[®] Instruments Technical Assistance Hotline for immediate consultation with an applications engineer: (800) 343-1391

AEMC[®] Instruments • 15 Faraday Dr. • Dover, NH 03820 USA • (800) 343-1391 • Fax (603) 742-2346 • E-mail: sales@aemc.com
Export Department: +1 (603) 749-6434 x520 • Fax +1 (603) 742-2346 • E-mail: export@aemc.com

950.BR-L452_0223 • Printed in the USA

© Chauvin Arnoux[®], Inc. d.b.a. AEMC[®] Instruments