

# Digital Micro-Ohmmeters

Models 6240, 6255 & 6292



## Measure low resistance with high accuracy

- ▶ Selectable test currents from 10mA to 200A (model dependent)
- ▶ Resolutions to 0.1 micro-ohm
- ▶ Accuracies to 0.05%
- ▶ Large easy to read backlit display
- ▶ Automatic and software temperature compensation (model dependent)
- ▶ Automatic multipoint measurements
- ▶ Internal data storage of test results
- ▶ Analysis and report generation software (DataView®) included
- ▶ Built into a rugged field proven case
- ▶ Kelvin test cables included

*Our products are backed by over 130 years of experience in test and measurement equipment, and encompass the latest international standards for quality and safety.*

 **Technical Hotline: (800) 343-1391**  
 **www.aemc.com**

 **AEMC<sup>®</sup>**  
INSTRUMENTS  
CHAUVIN ARNOUX GROUP



# MODEL 6240



## FEATURES

- ▶ Reliable low resistance measurements
- ▶ Four-terminal Kelvin resistance measurement eliminates test lead resistance
- ▶ Measures up to  $4000\mu\Omega$  with 10A of test current
- ▶ 0.25% basic accuracy
- ▶  $1\mu\Omega$  resolution
- ▶ Direct reading, easy to operate
- ▶ Test current selection of 1mA, 10mA, 100mA, 1A and 10A
- ▶ Polarity reversal button
- ▶ Overload and input fuse protection
- ▶ Manufactured to international safety and environmental standards
- ▶ Automatic scaling and zeroing
- ▶ Large terminals accept banana plugs and spade lugs
- ▶ Rechargeable NiMH battery with internal charger (110/230V) that can be charged during operation
- ▶ Rugged, double insulated watertight case
- ▶ Includes DataView® software for instrument configuration, data storage, analysis and report generation

## APPLICATIONS

- ▶ Aerospace metallic coating resistance measurement
- ▶ Bonding verification on earth/ground systems
- ▶ Weld joint integrity verification
- ▶ Contact resistance measurement of breakers and switchgear
- ▶ Aircraft and rail bonding checks
- ▶ Wire to terminal connections and resistance checks
- ▶ Battery strap resistance checks
- ▶ Cable joint and bus bar connection checks
- ▶ Mechanical bond tests



## Product 2129.80 Includes


- 2 Kelvin clips, 10ft (10A - Hippo)
- 2 Kelvin Probes 10ft (1A, spring loaded)
- NiMH rechargeable battery pack\*
- Optical USB cable
- US 115V power cord
- DataView® software
- Extra large tool bag
- 2 spare fuses (12.5A)
- User manual

\*Can be charged during operation.

## Accessories/Replacement Parts

- 1017.84 Kelvin Clips 10ft (10A - Hippo)
- 2118.70 Kelvin Clips 20ft (10A - Hippo)
- 2118.73 Kelvin Probes 10ft (1A, spring loaded)
- 2118.74 Kelvin Probes 20ft (1A, spring loaded)
- 2118.75 2 Kelvin Probes Pistol Grip 10ft (10A - spring loaded)
- 2118.76 2 Kelvin Probes Pistol Grip 20ft (10A - spring loaded)
- 2118.77 2 Kelvin Probes 10ft (10A - spring loaded)
- 2118.78 2 Kelvin Probes 20ft (10A - spring loaded)
- 2118.79 Kelvin Clips 10ft (1-10A)
- 2118.80 Kelvin Clips 20ft (1-10A)

# SPECIFICATIONS

<b>ELECTRICAL</b>						
<b>Range</b>	4000 $\mu\Omega$	40m $\Omega$	400m $\Omega$	4000m $\Omega$	40 $\Omega$	400 $\Omega$
<b>Accuracy</b>	0.25% of Reading $\pm$ 2cts	0.25% of Reading $\pm$ 2cts	0.25% of Reading $\pm$ 2cts	0.25% of Reading $\pm$ 2cts	0.25% of Reading $\pm$ 2cts	0.25% of Reading $\pm$ 2cts
<b>Resolution</b>	1 $\mu\Omega$	10 $\mu\Omega$	0.1m $\Omega$	1m $\Omega$	10m $\Omega$	100m $\Omega$
<b>Test Current</b>	10A	1A	1A	100mA	10mA	10mA
<b>Measurement Mode</b>	Single test start/stop or auto test and store of multiple measurements					
<b>Power Source</b>	Rechargeable 6V, 8.5Ah NiMH batteries					
<b>Battery Life</b>	Up to 850, 10A tests					
<b>Battery Charging</b>	Internal 110/230Vac, 50/60Hz charger					
<b>Power Management</b>	User selectable power save mode					
<b>Low Battery Indication</b>	 blinks when battery needs charging					
<b>Memory</b>	Stores up to 99 test results Data in memory can be reviewed on the instrument display, on a PC or via direct printout					
<b>Communication Software</b>	DataView <sup>®</sup> software					
<b>MECHANICAL</b>						
<b>Dimensions</b>	10.70 x 9.76 x 7.17" (270 x 250 x 180mm)					
<b>Weight</b>	10 lbs. (4.5kg)					
<b>Index of Protection</b>	IP53 (case open); IP54 (case closed)					
<b>Color</b>	Safety yellow case; gray faceplate UL94 V-0					
<b>DISPLAY</b>						
<b>Display Type</b>	4000-count LCD					
<b>Size</b>	4 x 2.25" (102 x 57mm)					
<b>Backlight</b>	Blue electroluminescent					
<b>COMMUNICATION</b>						
<b>Interface Port</b>	Optically isolated USB					
<b>ENVIRONMENTAL</b>						
<b>Operating Temperature</b>	14° to 132°F (-10° to 55°C); 10 to 85% RH					
<b>Storage Temperature</b>	-40° to +158°F (-40° to +70°C); 10 to 90% RH					
<b>SAFETY</b>						
<b>Safety Rating</b>	EN61010-1 300V CAT II					
<b>Double Insulation</b>	Yes					
<b>CE Mark</b>	Yes					
<b>Catalog No.</b>	2129.80					



1017.84 (10ft)  
2118.70 (20ft)



2118.73 (10ft)  
2118.74 (20ft)



2118.75  
2118.76



2118.77  
2118.78



2118.79 (10ft)  
2118.80 (20ft)

# MODEL 6255



## FEATURES

- ▶ Test up to 60 minutes continuously at 10A
- ▶ Measure from  $1\mu\Omega$  to  $2500\Omega$
- ▶ Test current selection of 1mA, 10mA, 100mA, 1A and 10A
- ▶ RTD temperature probe to check tested sample (optional)
- ▶ Selectable metal types
- ▶ Automatic and manual temperature correction
- ▶ EMF levels measured and eliminated in measurement
- ▶ Two programmable alarm set points
- ▶ Stores up to 1500 test results
- ▶ Selectable Inductive or Resistive test modes
- ▶ Automatic multiple test mode (multiple tests without pressing the test button)
- ▶ Large multi-line electroluminescent display
- ▶ Local or remote test setup and control
- ▶ Internal rechargeable batteries – conduct up to 5000 10A tests
- ▶ Rugged, double insulated watertight case

## Product 2129.84 Includes

- 2 Kelvin clips 10ft (10A - Hippo)
- 2 Kelvin Probes 10ft (1A, spring loaded)
- NiMH rechargeable 6V battery pack
- Optical USB cable
- US 115V power cord
- DataView® software
- Extra large tool bag
- User manual

## Accessories/Replacement Parts

- 1017.84 Kelvin Clips 10ft (10A - Hippo)
- 2118.70 Kelvin Clips 20ft (10A - Hippo)
- 2118.73 Kelvin Probes 10ft (1A, spring loaded)
- 2118.74 Kelvin Probes 20ft (1A, spring loaded)
- 2118.84 Kelvin Probes Pistol Grip 10ft (25A - spring loaded)
- 2118.85 Kelvin Probes Pistol Grip 20ft (25A - spring loaded)
- 2118.77 2 Kelvin Probes 10ft (10A - spring loaded)
- 2118.78 2 Kelvin Probes 20ft (10A - spring loaded)
- 2118.79 Kelvin Clips 10ft (1-10A)
- 2118.80 Kelvin Clips 20ft (1-10A)
- 2129.95 RTD Temperature Probe
- 2129.96 RTD Temperature Probe w/ 7ft extension cable


## APPLICATIONS

- ▶ Aerospace metallic coating resistance measurement
- ▶ Bonding resistance measurement of motors and transformers
- ▶ Bonding verification on earth/ground systems
- ▶ Weld joint integrity verification
- ▶ Contact resistance measurement of breakers and switchgear
- ▶ Aircraft and rail bonding checks
- ▶ Wire to terminal connections and resistance checks
- ▶ Battery strap resistance checks
- ▶ Cable joint and bus bar connection checks
- ▶ Mechanical bond tests





# SPECIFICATIONS

<b>ELECTRICAL</b>							
<b>Range</b>	5.000mΩ	25.000mΩ	250.00mΩ	2500.0mΩ	25.000Ω	250.00Ω	2500.0Ω
<b>Accuracy</b>	0.15% of Reading +1μΩ	0.05% of Reading +3μΩ	0.05% of Reading +30μΩ	0.05% of Reading +0.3mΩ	0.05% of Reading +3mΩ	0.05% of Reading +30mΩ	0.05% of Reading +300mΩ
<b>Resolution</b>	0.1μΩ	1μΩ	10μΩ	0.1mΩ	1mΩ	10mΩ	100mΩ
<b>Test Current</b>	10A			1A	100mA	10mA	1mA
<b>Measurement Mode</b>	Selectable: Inductive (continuous test), Resistive (instantaneous test) or Auto (multiple tests)						
<b>Power Source</b>	Rechargeable 6V, 8.5Ah NiMH batteries						
<b>Battery Life</b>	Approximately 5000, 10A tests						
<b>Battery Charging</b>	Internal 120/240Vac, 45/400Hz line voltage						
<b>Power Management</b>	Display powers down after 1, 5 or 10 minutes of inactivity (operator selectable)						
<b>Low Battery Indication</b>	 displays when battery needs changing						
<b>Memory</b>	Stores up to 1500 test results Data in memory can be reviewed on the instrument display, on a PC or via direct printout						
<b>Communication Software</b>	DataView® software						
<b>MECHANICAL</b>							
<b>Dimensions</b>	10.63 x 9.84 x 7.09" (270 x 250 x 180mm)						
<b>Weight</b>	8.1 lbs (3.69kg)						
<b>Index of Protection</b>	IP53 (case open); IP64 (case closed)						
<b>Color</b>	Safety yellow case; gray faceplate UL94 V-0						
<b>DISPLAY</b>							
<b>Display Type</b>	Large 50,000-count digital						
<b>Size</b>	4 x 2.25" (102 x 57mm)						
<b>Backlight</b>	Blue electroluminescent						
<b>COMMUNICATION</b>							
<b>Interface Port</b>	RS-232						
<b>ENVIRONMENTAL</b>							
<b>Operating Temperature</b>	14° to 132°F (-10° to 55°C); 10 to 80% RH (non-condensing)						
<b>Storage Temperature</b>	-40° to 140°F (-40° to 60°C); 10 to 80% RH (non-condensing)						
<b>SAFETY</b>							
<b>Safety Rating</b>	EN 61010-1, 50V CAT III						
<b>Double Insulation</b>	Yes						
<b>CE Mark</b>	Yes						
<b>Catalog No.</b>	2129.84						



1017.84 (10ft)  
2118.70 (20ft)



2118.73 (10ft)  
2118.74 (20ft)



2118.84  
2118.85



2118.77  
2118.78



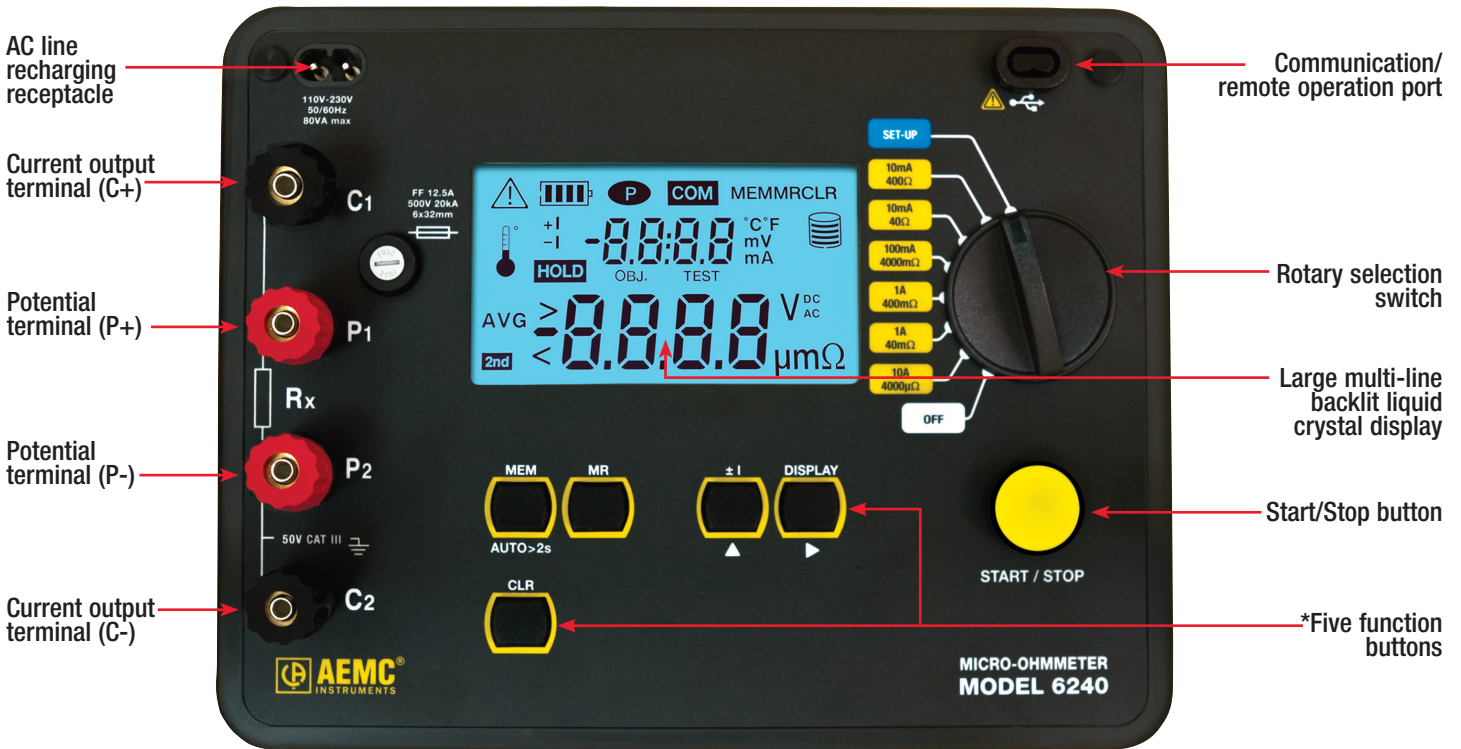
2118.79 (10ft)  
2118.80 (20ft)



2129.95  
2129.96 (w/ cable)

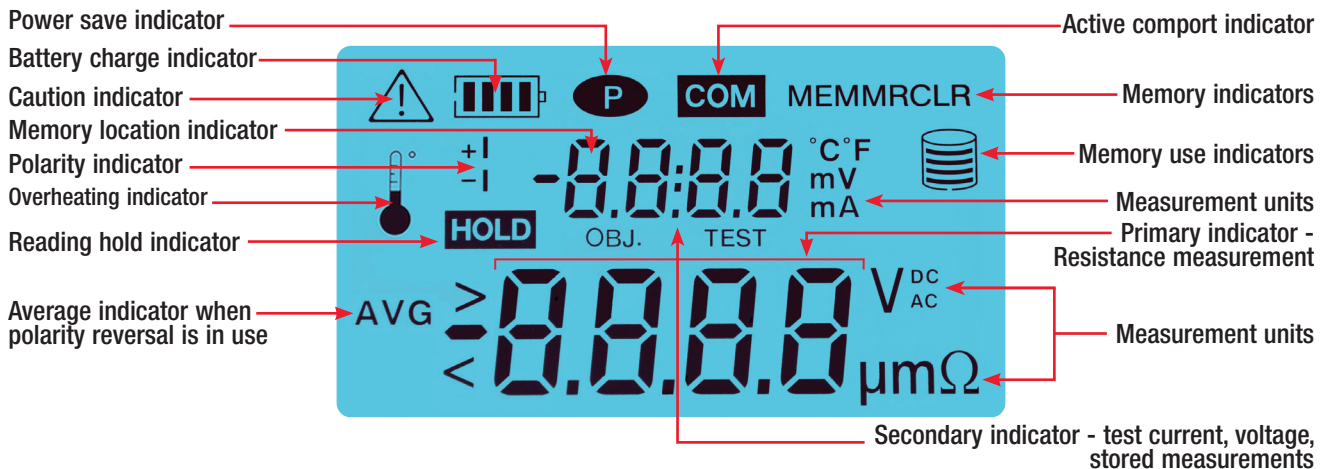
# Model 6240

## Construction



\* Function buttons allow direct access to data storage and retrieval, polarity reversal, auto/manual measurement and displayed values.

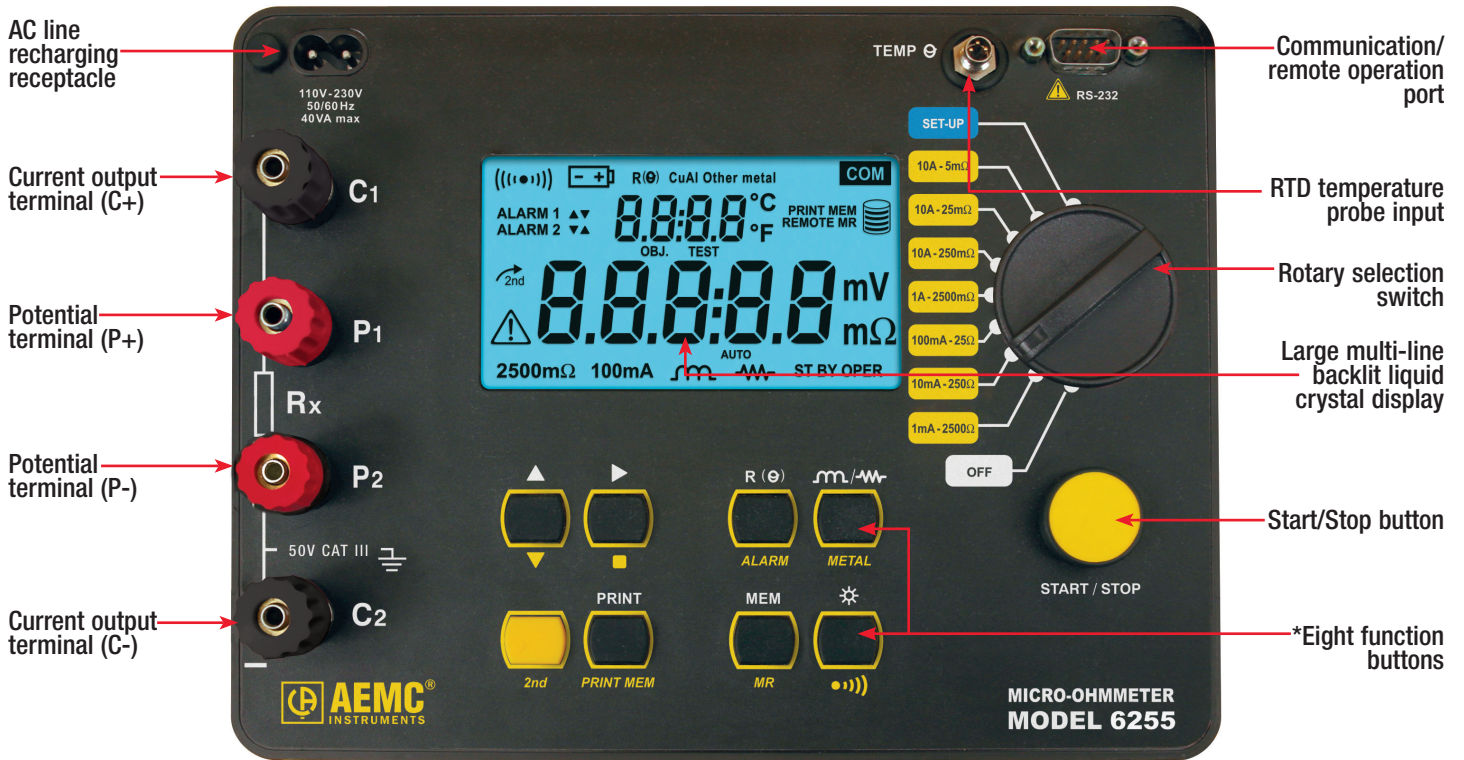
## Functional Display





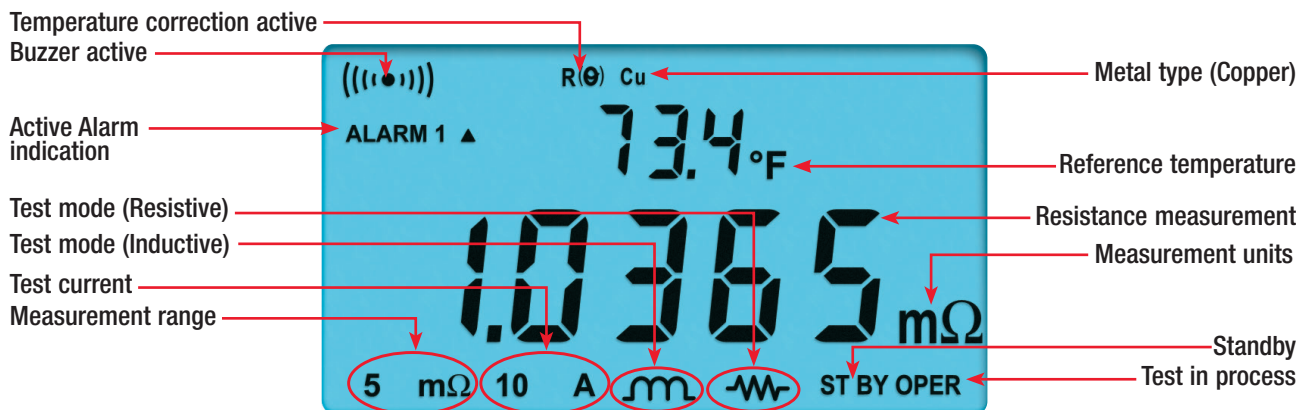
# Model 6255

## Construction



\* Function buttons allow direct access to data storage and retrieval, polarity reversal, auto/manual measurement and displayed values.

## Functional Display



# MODEL 6292



## Product 2129.83 Includes

- Accessory Bag
- 2 25ft Kelvin Test Leads w/ Hippo Clamp (200A)
- 1 Green Ground Lead w/ Clamp
- USB Cable
- Power Cord
- User manual
- DataView® software

## Accessories/Replacement Parts

- 2129.72 Lead - Set of 2 25ft Kelvin Leads with Hippo Clamp (200A)
- 2129.73 Lead - Set of 2 50ft Kelvin Leads with Hippo Clamp (200A)
- 2129.86 Current Probe Model MR6292
- 2129.88 Lead - 10ft Earth/Ground w/ attached Clamp
- 5000.40 110V US Power Cord

## FEATURES

- ▶ Advanced cooling system allows continuous testing at 100A or below and up to 120 seconds at 200A
- ▶ Incorporates True DC high output with minimum, near zero, ripple lower than 2% of full range.
- ▶ Allows multiple sequential tests
- ▶ Programmable test currents from 5 to 200A
- ▶ Measures single or both sides grounded systems
- ▶ Direct viewing of stored tests on the display
- ▶ Accurately measures low contact resistances from 0.1 $\mu\Omega$  to 1 $\Omega$
- ▶ Resolution of 0.1 $\mu\Omega$
- ▶ Large LCD digital display, available in four languages
- ▶ Stores up to 8000 test results
- ▶ USB communication interface
- ▶ Direct printout using DataView® software and a PC
- ▶ Rugged, light-weight and water-resistant case

## APPLICATIONS

- ▶ Test switchgear contact resistance
- ▶ Test circuit breaker contact resistance
- ▶ Test air frame bonding
- ▶ Test rail bonding
- ▶ Test pipeline bonding
- ▶ Test large transformers





# SPECIFICATIONS

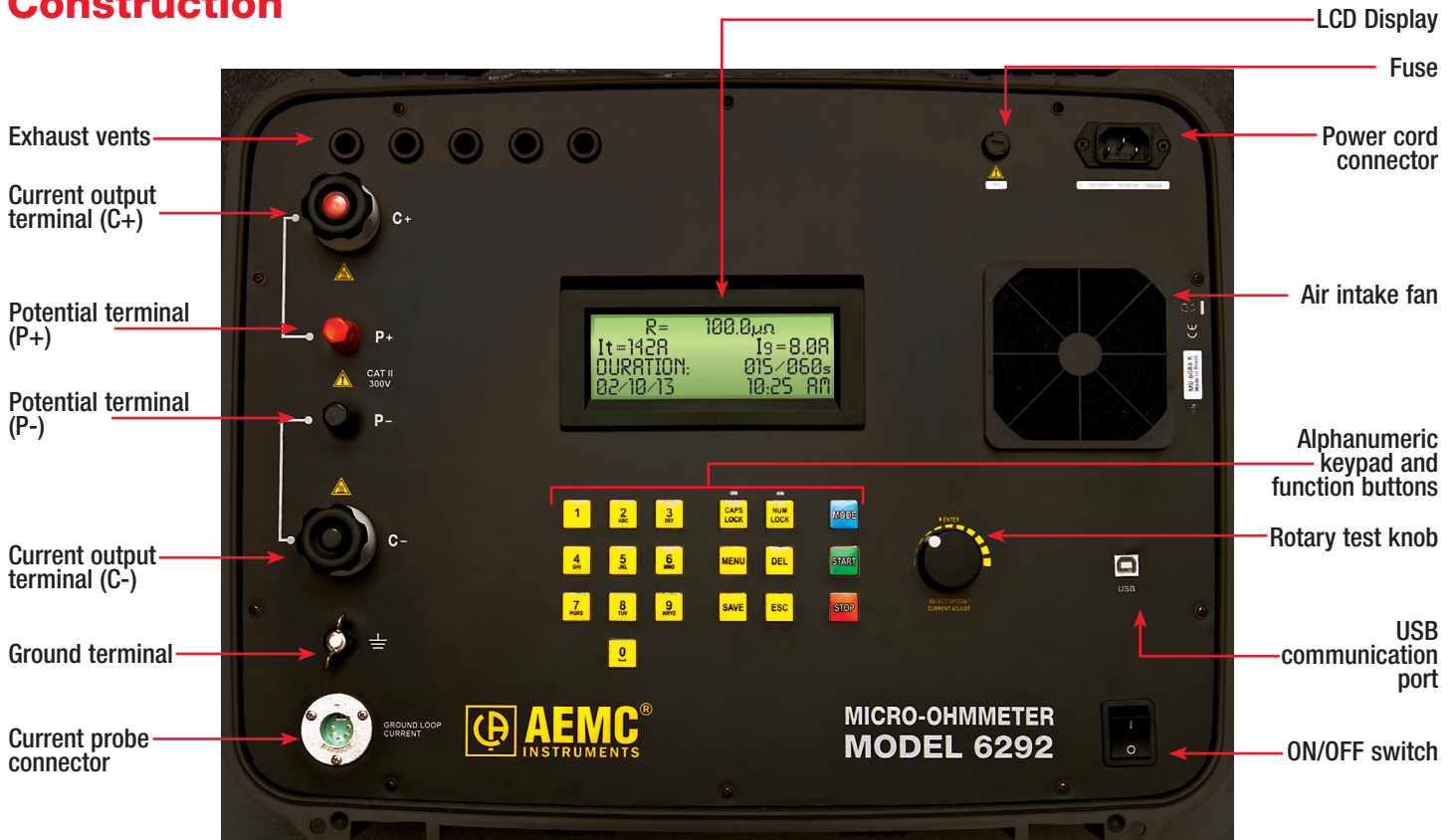
ELECTRICAL	
Test Current Range	Programmable from 5 to 200A (True DC)
Resistance Range	0.1 $\mu\Omega$ to 2m $\Omega$ ; 2 to 200m $\Omega$ ; 200m $\Omega$ to 1 $\Omega$
Accuracy	$\pm$ 1% of reading from 50 $\mu\Omega$ to 1 $\Omega$
Resolution	0.1 $\mu\Omega$ (200A max) 10 $\mu\Omega$ (25A max at 200m $\Omega$ ) 1m $\Omega$ (5A max at 1 $\Omega$ )
Output Voltage	100V <sub>AC</sub> : 4.2V @ 200A 220V <sub>AC</sub> : 8.6V @ 200A
Max. Load Resistance	100V <sub>AC</sub> : 20m $\Omega$ @ 200A 220V <sub>AC</sub> : 42m $\Omega$ @ 200A
Measurement Method	Four-terminal, Kelvin-type
Test Mode	Normal or both sides grounded (BSG)*
Adjustable Test Time	5 to 120 seconds at 200A, unlimited at 100A or below
Memory	Stores up to 8000 measurements
Communication Software	DataView® software
Power Supply	100 to 240V <sub>AC</sub> , 50/60Hz
MECHANICAL	
Dimensions	19.8 x 15.5 x 7.5" (502 x 394 x 190mm)
Weight	24.25 lbs (11kg) approx
DISPLAY	
Display Type	4 line x 20 characters per line LCD
Size	4.75 x 2.75" (121 x 70mm)
Backlight	adjustable
COMMUNICATION	
Interface port	USB 2.0
ENVIRONMENTAL	
Operating Temperature	32° to 122°F (0° to 50°C)
Storage Temperature	14° to 158°F (-10° to 70°C)
Humidity	95% RH (non-condensing)
SAFETY	
Safety Rating	IEC61010-1
Protection	Protections against over current, short circuit, overheating and over voltage at output terminals
Environmental Protection	IP54 with closed lid
Test w/ Both Sides Grounded	Yes
CE Mark	Yes

\*BSG Test Mode requires optional Current Probe Model MR6292 (Cat. #2129.86)

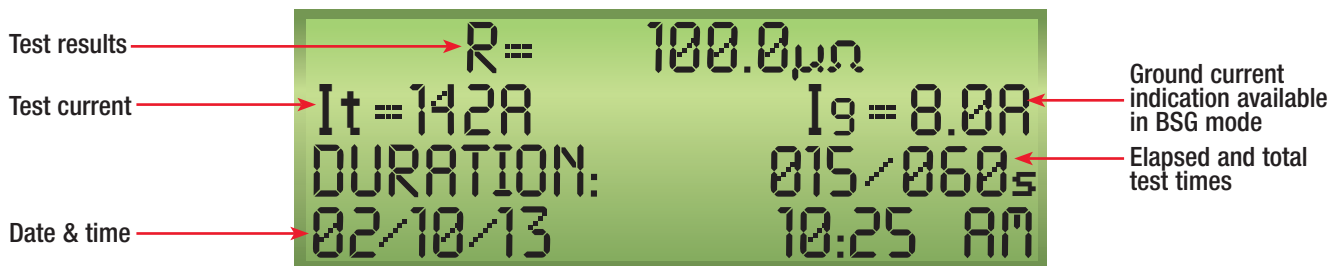


# Model 6292

## Construction



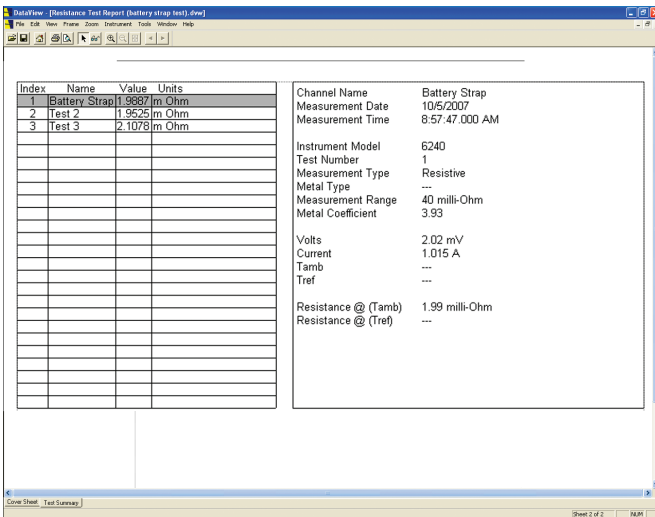
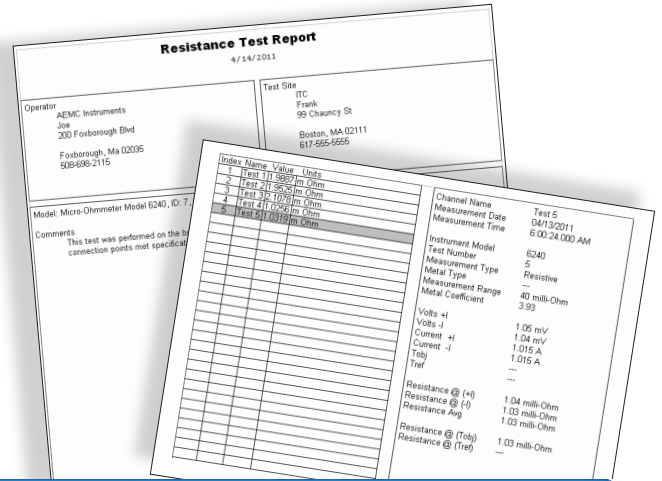
## Functional Display



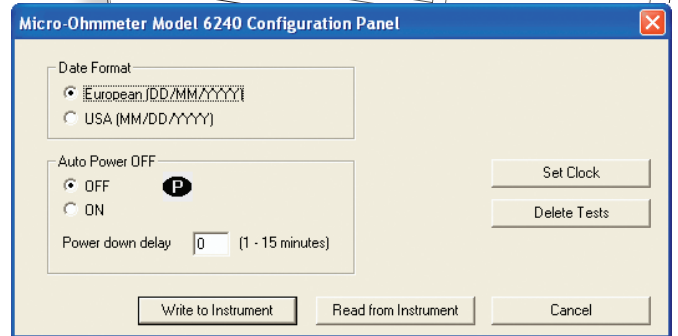


## FEATURES

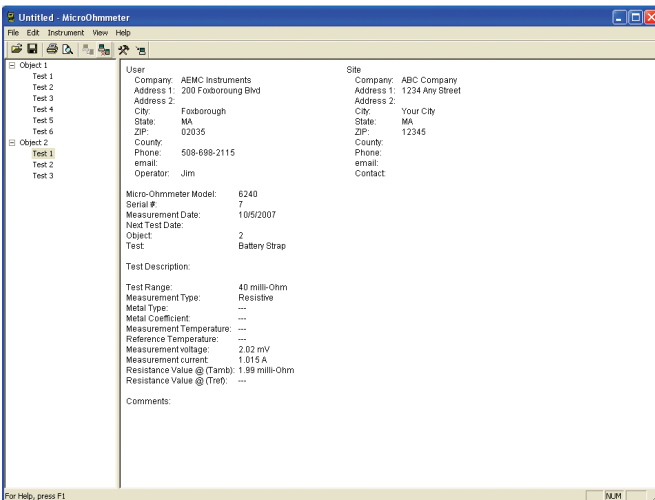
- ▶ Configure instrument from your PC
- ▶ Customize views and templates to your exact needs
- ▶ Create and store a library of configurations that can be used with the Models 6240, 6255, and 6292 as needed
- ▶ Display test results
- ▶ Print reports using standard included templates or custom templates you design
- ▶ Upload stored test results to your PC



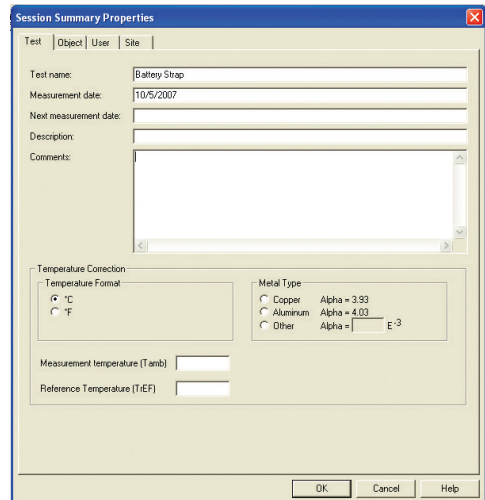
Statistical presentation of measurements



All set up functions available from one screen



Clean, easy-to-read report of test results



Easily documents statistics about user and test site to be stored with the data

**United States & Canada**

**Chauvin Arnoux®, Inc.  
d.b.a. AEMC® Instruments**

15 Faraday Drive  
Dover, NH 03820 USA  
Tel (603) 749-6434  
Fax (603) 742-2346

**Customer Support**

Place orders, obtain prices  
and delivery options

(800) 343-1391

[customerservice@aemc.com](mailto:customerservice@aemc.com)

**Sales & Marketing Department**

[sales@aemc.com](mailto:sales@aemc.com)

[marketing@aemc.com](mailto:marketing@aemc.com)

**United States & Canada (continued)**

**Repair & Calibration Service**

[repair@aemc.com](mailto:repair@aemc.com)

**Technical & Product  
Application Support**

(800) 343-1391

[techsupport@aemc.com](mailto:techsupport@aemc.com)

**South America, Central America,  
Mexico & the Caribbean**

**Chauvin Arnoux®, Inc.**

**d.b.a. AEMC® Instruments**

15 Faraday Drive  
Dover, NH 03820 USA

[export@aemc.com](mailto:export@aemc.com)

**Australia & New Zealand**

**Chauvin Arnoux®, Inc.**

**d.b.a. AEMC® Instruments**

15 Faraday Drive  
Dover, NH 03820 USA

[export@aemc.com](mailto:export@aemc.com)

**All other countries**

**Chauvin Arnoux®**

12-16 Rue Sarah Bernhardt  
92600 Asnières-Sur-Seine, FR

Tel +1 33 1 44 85 45 85

Fax +1 33 1 46 27 73 89

[info@chauvin-arnoux.com](mailto:info@chauvin-arnoux.com)

[www.chauvin-arnoux.com](http://www.chauvin-arnoux.com)



*Family of Products*

**THE SMART CHOICE**

FOR ELECTRICAL TEST & MEASUREMENT INSTRUMENTS

To learn more, visit [www.aemc.com](http://www.aemc.com)

Call the AEMC® Instruments Technical Assistance Hotline for immediate consultation with an applications engineer: (800) 343-1391

AEMC® Instruments • 15 Faraday Dr. • Dover, NH 03820 USA • (800) 343-1391 • Fax (603) 742-2346 • E-mail: [sales@aemc.com](mailto:sales@aemc.com)  
Export Department: +1 (603) 749-6434 x520 • Fax +1 (603) 742-2346 • E-mail: [export@aemc.com](mailto:export@aemc.com)

950.BR-6240-6255-6292\_20240814 • Printed in the USA

© Chauvin Arnoux®, Inc. d.b.a. AEMC® Instruments