

CLAMP-ON METERS

400 & 600 SERIES BLUETOOTH® EDITION
POWER AND HARMONIC METERS



POWER CLAMP-ON MODELS 407 & 607

Measures single- and three-phase power (real, reactive and apparent) up to 3 MW (only on DC) with resolution to 1 W



DataView®



FEATURES

- UL 94 VI flame retardant self-extinguishing
- 10,000-count blue electroluminescent backlit display
- Measures up to 1000 V_{AC} (1400 V peak), 1000 V_{DC} and AC+DC with resolution to 10 mV
- Measures up to 2000 A_{AC} and 3000 A_{DC} (Model 607)
- Measures single- and three-phase power (real, reactive and apparent) up to 2 MW with resolution to 1 W
- Measures frequency to 20 kHz with 0.1 Hz resolution
- True InRush® current measurement with 100 mS capture
- Measures harmonics up to the 25th
- Records up to 1000 measurements
- Bluetooth® communication (communicates up to 30 ft)
- Includes FREE DataView® software for download and report generation
- Jaw opening up to:
 - 1.89 inches (48 mm) (400 series)
 - 2.36 inches (60 mm) (600 series)

MODELS	407 TRMS	607 TRMS
ELECTRICAL		
Current AC (rms)	1000 A	2000 A
Current DC	1500 A	3000 A
Current AC+DC	1500 A Peak	3000 A Peak
Voltage AC (rms)	1000 V	
Voltage DC	1000 V	
Voltage AC+DC	1400 V Peak	
Ohms	0.1 Ω to 99.99 kΩ	
Continuity (Buzzer)	Yes (< 40 Ω)	
Total Harmonic Distortion	Yes	
Individual Harmonics (to 25 th)	Yes	
Single- and 3-Phase Real Power (AC, DC, AC / DC)*	1000 kW	2000 kW
Single- and 3-Phase Reactive Power (AC, DC, AC / DC)*	1000 kvar	2000 kvar
Single- and 3-Phase Apparent Power (AC, DC, AC / DC)*	1000 kVA	2000 kVA
Voltage Frequency	20 kHz	
Current Frequency	2 kHz	1 kHz
Power Factor	Yes	
THD-r / THD-f	Yes / Yes	
Auto AC / DC	Yes (V & A)	
Auto Power OFF	Yes	
Hold Button	Yes	
Backlight Button	Yes	
Min / Max Button	Yes	
True InRush® Function	Yes	
Peak ± Function	Yes	
Harmonics Function	Yes	
Rec (Record) Function	Yes	
Wireless BT (Bluetooth®) Function	Yes	
Record (Recordings)	1000	
Hz Button	Yes	

*Three-phase measurements assume balanced load. Consult factory for NIST Calibration prices.

PRODUCT INCLUDES

Hard carrying case, set of (2) color-coded silicone test leads, test probes and alligator clips, Bluetooth® USB adapter, (4) 1.5 V AA batteries, safety information sheet, and USB drive supplied with DataView® software and user manual.



CAT. #	DESCRIPTION
2139.51	Power Clamp-On Meter Model 407 (TRMS, 1000 V _{AC/DC} , 1000 A _{AC} /1500 A _{DC} , Ohms, Continuity, Energy, Harmonics, Power, THD, Recording)
2139.61	Power Clamp-On Meter Model 607 (TRMS, 1000 V _{AC/DC} , 2000 A _{AC} /3000 A _{DC} , Ohms, Continuity, Energy, Harmonics, Power, THD, Recording)

CLAMP-ON METERS

SELECTION GUIDE

Models	CAT. #	Type	AC Current	AC Voltage	DC Current	DC Voltage	Resistance (Ω)	Continuity	Frequency (Hz)		Jaw Size	Dimensions
									Current	Voltage		
205	2139.40	AC / DC TRMS	600 A	1000 V	900 A	1000 V	60 k Ω	< 40 Ω	3 kHz	20 kHz	1.34 in (34 mm)	(8.7 x 3.1 x 1.65) in
404	2139.22	AC / DC TRMS	1000 A	1200 V	1500 A	1700 V	100 k Ω	< 40 Ω	2 kHz	20 kHz	1.89 in (48 mm)	(10.7 x 3.6 x 1.6) in
407	2139.51	AC / DC TRMS	1000 A	1000 V	1500 A	1000 V	100 k Ω	< 40 Ω	2 kHz	20 kHz	1.89 in (48 mm)	(10.7 x 3.6 x 1.6) in
606	2139.62	AC / DC TRMS	2000 A	1200 V	3000 A	1700 V	100 k Ω	< 40 Ω	1 kHz	20 kHz	2.36 in (60 mm)	(11.65 x 4.37 x 1.61) in
607	2139.61	AC / DC TRMS	2000 A	1000 V	3000 A	1000 V	100 k Ω	< 40 Ω	1 kHz	20 kHz	2.36 in (60 mm)	(11.65 x 4.37 x 1.61) in
505	2139.82	AC / DC TRMS	400 A	600 V	400 A	600 V	600 Ω	< 35 Ω	400 Hz		1.18 in (30 mm)	(7.83 x 2.95 x 1.42) in
514	2117.70	AC / DC TRMS	1000 A	750 V	1000 A	1000 V	4000 Ω	< 40 Ω	10 kHz		1.58 in (40 mm)	(9.53 x 2.60 x 1.42) in
566*	2139.83	AC TRMS	100 A	600 V	–	600 V	600 k Ω	< 45 Ω	500 Hz		0.91 in (23 mm)	(8.27 x 3.0 x 1.32) in
CM605	7000.02	AC / DC	100 A	600 V	100 A	600 V	9999 Ω	< 100 Ω	500 Hz		0.60 in (15 mm)	(7.95 x 2.76 x 1.33) in

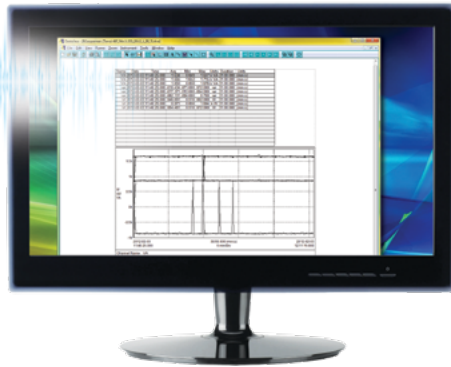
*Model 566 can be found in the Leakage Current Meters & Probes.
Consult factory for NIST Calibration prices.

CLAMP-ON METERS

DataView® Data Analysis and Reporting Software

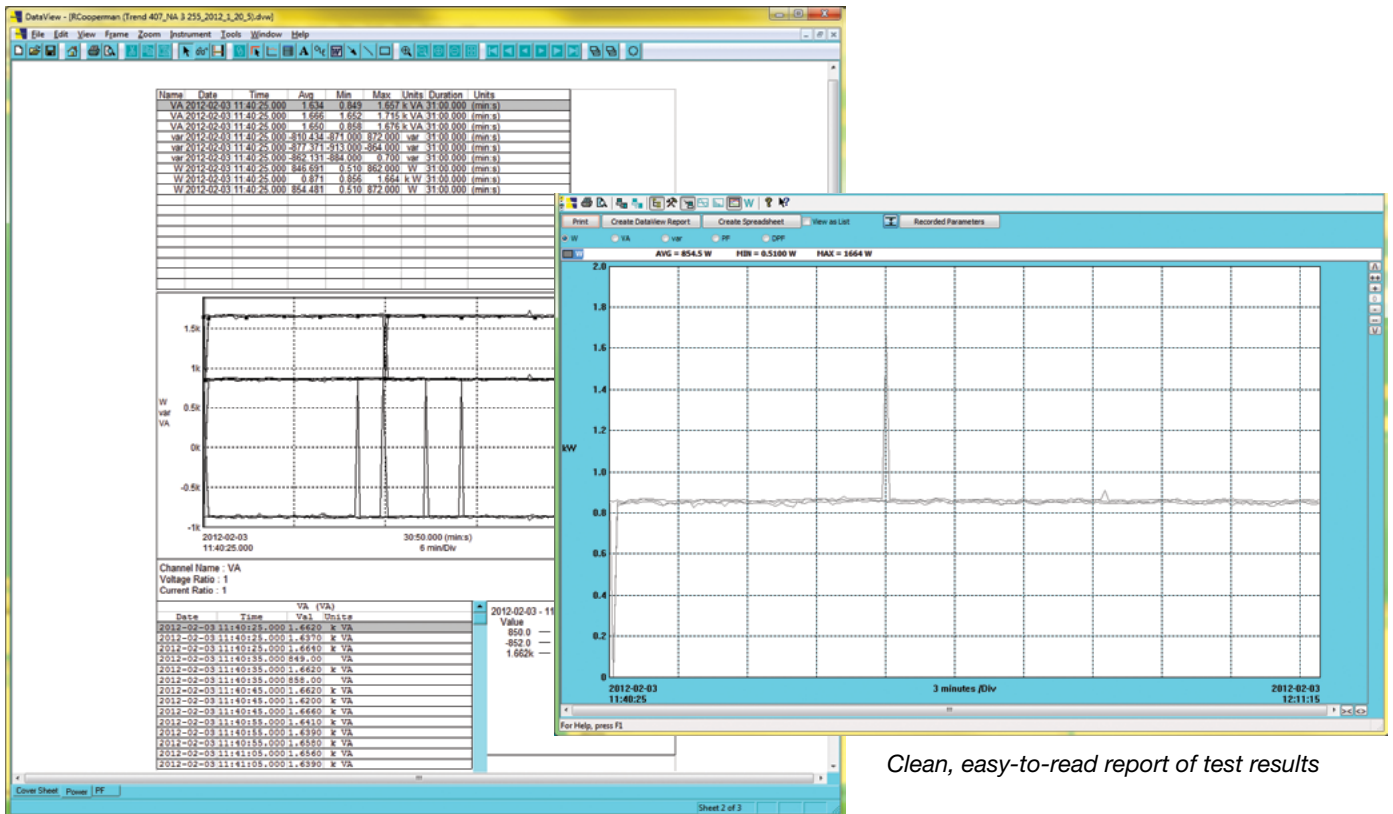


DataView® software, user manual and quick start guide are included on the USB



FEATURES

- Download and store recorded data
- Wireless Bluetooth® communication
- Print reports using the included default templates or custom templates that you design
- Free updates are available on our website www.aemc.com



Clean, easy-to-read report of test results

DataView® software report

