

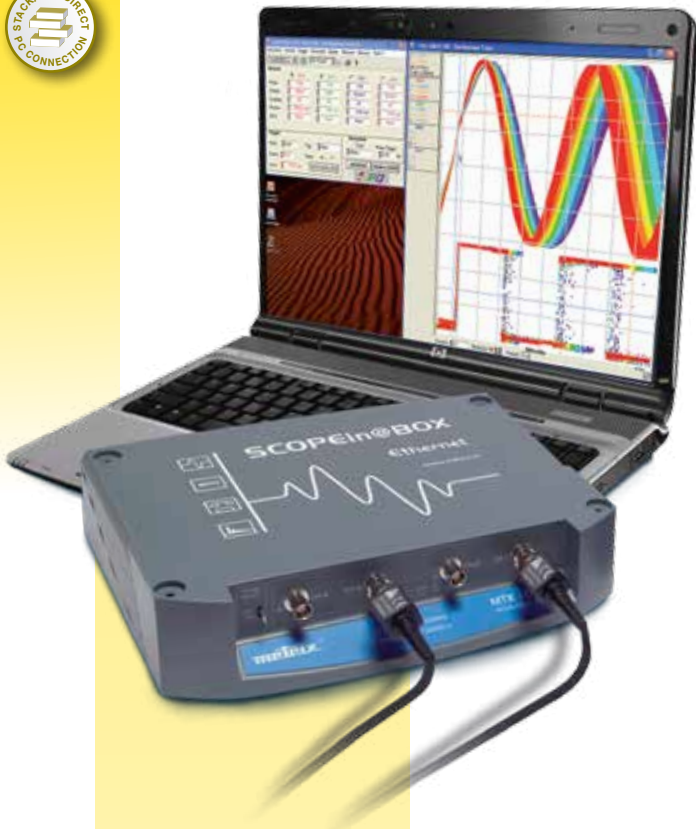
Special product features

# OTHER PRODUCTS FROM CHAUVIN ARNOUX® GROUP

## PC Oscilloscopes

### Model MTX 162

Compact, lightweight and stackable, these instruments can be connected directly to a PC via USB or Ethernet

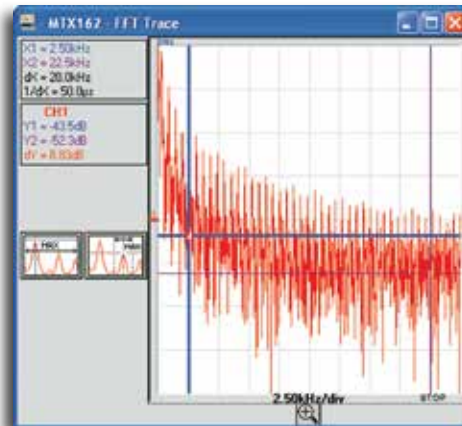


Connect and view results directly from your PC computer

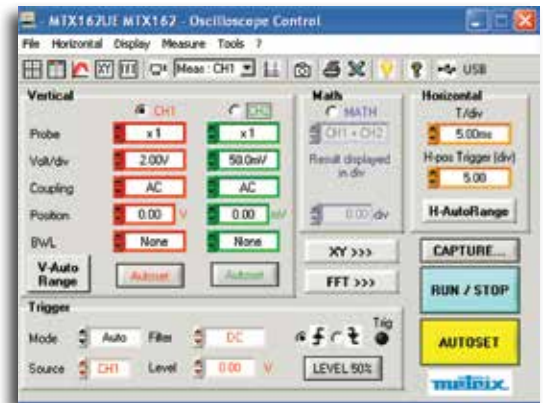


### SPECIFICATIONS

<b>MODEL</b>	<b>MTX 162</b>
<b>INTERFACE</b>	
Screen Specifications	Color PC screen (min. resolution: 1024 x 768)
Display Mode	8 x 10 div.- Multi-windowing (control panel, trace, zoom, FFT, etc.)
Traces on Screen	4 traces + 4 references
Screen Control	Windows-like & online help; All commands available via mouse
<b>VERTICAL</b>	
Vertical Sensitivity	5mV to 100V/div
Bandwidth	60MHz (bandwidth limiter: 15MHz, 1.5MHz or 5kHz)
Channels	2 channels, class 1, common ground
<b>HORIZONTAL</b>	
Time Base Speed	32 ranges from 5ns to 100s/div
<b>TRIGGER</b>	
Mode	Auto, Triggered, One-shot ROLL, Auto-level at 50%
Source	CH1, CH2, Line
Type	Rising or falling edge, adjustable pretriggering from 0 to 100%
<b>DIGITAL MEMORY</b>	
Max. Sampling Speed	Repetitive = 20GS/s; One-shot = 50MS/s
Vertical Resolution	8 bits
Memory Capacity	Depth = 50,000 points – storage capacity depends on PC configuration used
<b>COMMUNICATION</b>	
Software	PC operating software and LabWindows/LabView drivers (included)
<b>SPO (SMART PERSISTENCE OSCILLOSCOPE)</b>	
Duration of Persistence	Analog remanent mode
<b>MEASUREMENT PROCESSING</b>	
FFT Analyzer/MATH Functions	FFT, +, -, x, /
Manual Cursors	dv, dt, 1/dt, phase – cursors linked or unlinked to trace
Automatic Measurements	2 or 19 measurements out of 19 + automatic phase on/any type of curve markers and limits
<b>RECORDER MODE</b>	
Duration/Sampling	Dedicated ROLL mode from 2s to 33min



Real-time trace



Typical PC setup screen

CATALOG NO.	DESCRIPTION
2150.14	PC Scope Module Model MTX 162UE (2-Channel, 60MHz)
2150.15	PC Scope Module Model MTX 162UEW (2-Channel, Wi-Fi, 60MHz)