

Thermal Imaging IR Camera Model 1954



THERMAL IMAGING CAMERAS

Copyright© Chauvin Arnoux®, Inc. d.b.a. AEMC® Instruments. All rights reserved.

No part of this documentation may be reproduced in any form or by any means (including electronic storage and retrieval or translation into any other language) without prior agreement and written consent from Chauvin Arnoux®, Inc., as governed by United States and International copyright laws.

Chauvin Arnoux®, Inc. d.b.a. AEMC® Instruments
15 Faraday Drive • Dover, NH 03820 USA
Phone: (603) 749-6434 or (800) 343-1391 • Fax: (603) 742-2346

This documentation is provided **as is**, without warranty of any kind, express, implied, or otherwise. Chauvin Arnoux®, Inc. has made every reasonable effort to ensure that this documentation is accurate; but does not warrant the accuracy or completeness of the text, graphics, or other information contained in this documentation. Chauvin Arnoux®, Inc. shall not be liable for any damages, special, indirect, incidental, or inconsequential; including (but not limited to) physical, emotional or monetary damages due to lost revenues or lost profits that may result from the use of this documentation, whether or not the user of the documentation has been advised of the possibility of such damages.

Statement of Compliance

Chauvin Arnoux[®], Inc. d.b.a. AEMC[®] Instruments certifies that this instrument has been calibrated using standards and instruments traceable to international standards.

We guarantee that at the time of shipping your instrument has met the instrument's published specifications.

An NIST traceable certificate may be requested at the time of purchase, or obtained by returning the instrument to our repair and calibration facility, for a nominal charge.

The recommended calibration interval for this instrument is 12 months and begins on the date of receipt by the customer. For recalibration, please use our calibration services. Refer to our repair and calibration section at www.aemc.com/calibration.

Serial #: _____

Catalog #: 2121.41

Model #: 1954

Please fill in the appropriate date as indicated:

Date Received: _____

Date Calibration Due: _____








Chauvin Arnoux[®], Inc.
d.b.a AEMC[®] Instruments
www.aemc.com

INTRODUCTION

Thank you for purchasing an AEMC® Instruments **Thermal Imaging IR Camera Model 1954**.

For best results from your instrument and for your safety, read the enclosed operating instructions carefully and comply with the precautions for use. Only qualified and trained operators should use this product.

International Electrical Symbols

	CAUTION - Risk of Danger! Indicates a WARNING . Whenever this symbol is present, the operator must refer to the user manual before operation.
	Indicates Important information to acknowledge
	This product complies with the Low Voltage & Electromagnetic Compatibility European directives.
	The product has been declared recyclable.
	In the European Union, this product is subject to a separate collection system for recycling electrical and electronic components in accordance with directive WEEE 2012/19/EU.

Precautions for Use

An infrared camera is a sensitive optical measuring device. Pay special attention to the following points:

- Never aim the camera at the sun, a laser welding, or other source of powerful thermal radiation.
- Avoid exposure to dust with the lens flap open.
- Do not touch the lens with your fingers.
- Avoid jolting or dropping the camera.

If parts of the camera are damaged or not functioning as expected following failure to heed the warnings listed above, neither the manufacturer nor the distributor shall be held liable, and all costs incurred shall be borne solely by the operator.

Receiving Your Shipment

Upon receiving your shipment, make sure that the contents are consistent with the packing list. Notify your distributor of any missing items. If the equipment appears to be damaged, file a claim immediately with the carrier and notify your distributor at once, giving a detailed description of any damage. Save the damaged packing container to substantiate your claim.

Ordering Information

Thermal Imaging IR Camera Model 1954.....Cat. #2121.41

Includes carrying case, external battery charger, USB cable, four NiMh rechargeable batteries, micro SD card with adaptor, Bluetooth headset, quick start guide, and a USB drive containing the user manual, CAmReport software, and software manual.

Replacement Parts

Case - Carrying Case with Foam InsertCat. #2121.60

Case - USB (Type A to 5-pin Mini-B)Cat. #2126.49

The rechargeable batteries supplied with the camera can be charged with any commercially available AA charger.

QUICK START STEPS

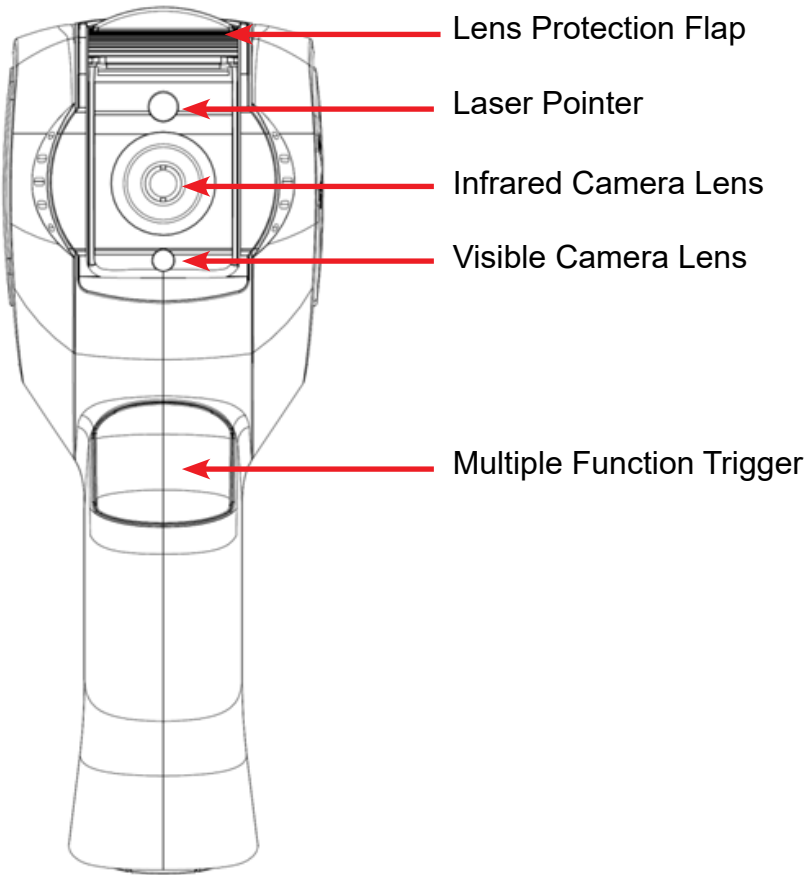
The following steps assume default settings:

1. Insert charged batteries in the camera (if not already installed).
2. Insert the micro SD memory card into its slot.
3. Open the flap protecting the lenses.
4. **Press** the ON/OFF key:
 - If you have installed new batteries, configure Battery Manager (see instructions in the User Manual § 2.2.1).
 - If prompted, enter the date and time.
5. Aim at the target. An IR image (thermogram) of the target appears in the display.
6. To save the thermogram and its associated visible light image, **press** F2 to freeze the image and then **press** F3. The images are saved in a file in the micro SD card.
7. You can recall and view saved images on the camera, or transfer images to a computer (using the USB cable or a micro SD card reader) for analysis and report generation with the provided CAmReport software.

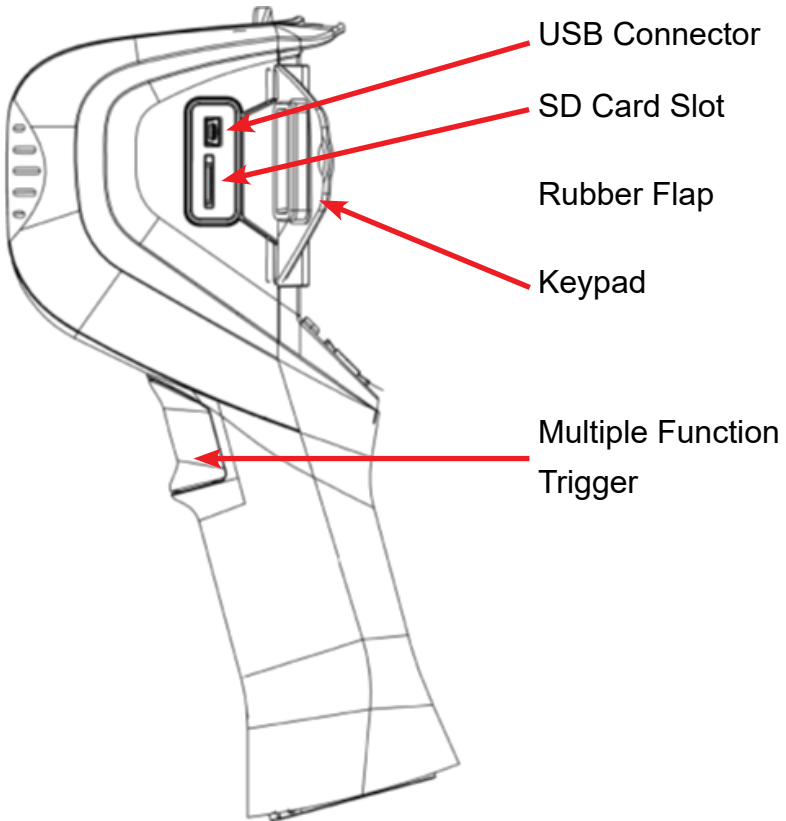


NOTE: For more information, refer to the User Manual on the USB Drive.

FRONT VIEW



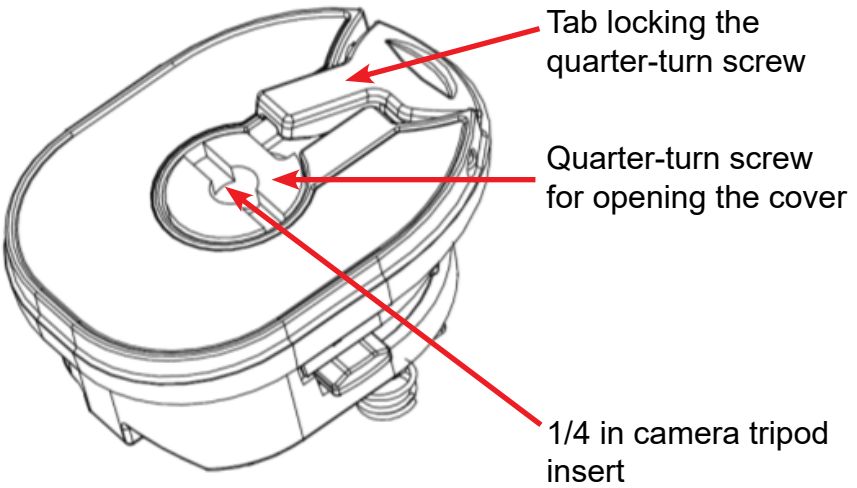
SIDE VIEW



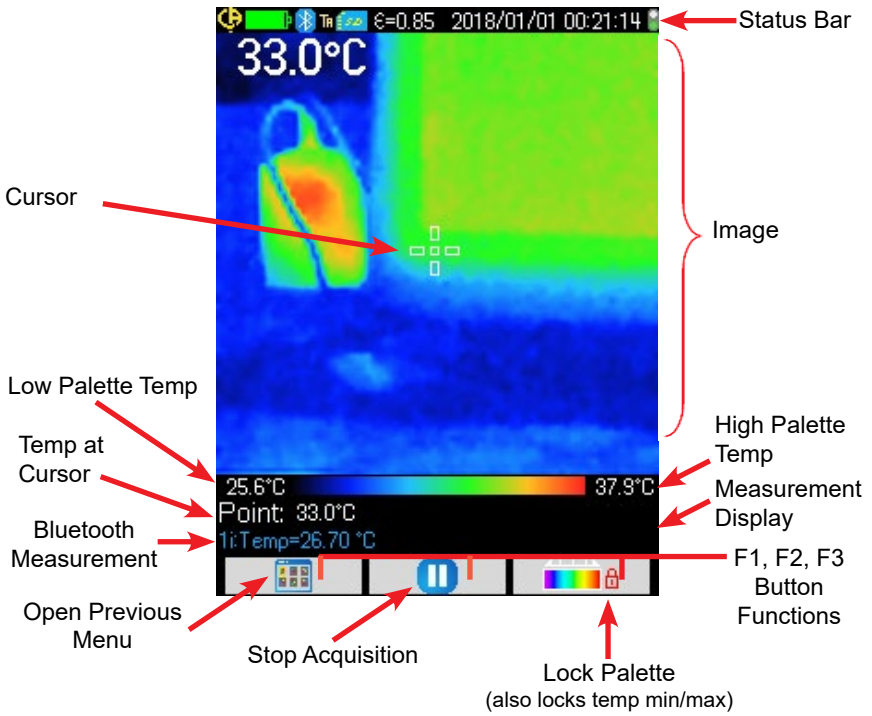
KEY FUNCTIONS



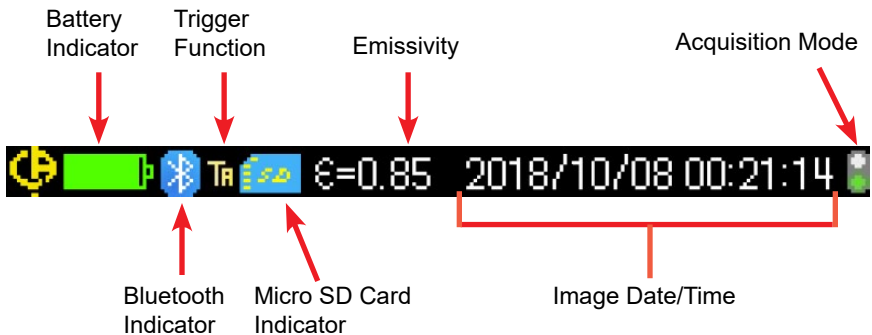
BATTERY COMPARTMENT COVER



DISPLAY



STATUS BAR



MAINTENANCE

Repair And Calibration

To ensure that your instrument meets factory specifications, we recommend that it be sent back to our factory Service Center at one-year intervals for recalibration or as required by other standards or internal procedures.

For instrument repair and calibration:

You must contact our Service Center for a Customer Service Authorization Number (CSA#). Send an email to repair@aemc.com requesting a CSA#, you will be provided a CSA Form and other required paperwork along with the next steps to complete the request. Then return the instrument along with the signed CSA Form. This will ensure that when your instrument arrives, it will be tracked and processed promptly. Please write the CSA# on the outside of the shipping container. If the instrument is returned for calibration, we need to know if you want a standard calibration or a calibration traceable to N.I.S.T. (includes calibration certificate plus recorded calibration data).

Ship To: Chauvin Arnoux®, Inc. d.b.a. AEMC® Instruments
15 Faraday Drive ▪ Dover, NH 03820 USA
Phone: (800) 945-2362 (Ext. 360) / (603) 749-6434 (Ext. 360)
Fax: (603) 742-2346
E-mail: repair@aemc.com

(Or contact your authorized distributor.)

Contact us for the costs for repair, standard calibration, and calibration traceable to N.I.S.T.



NOTE: You must obtain a CSA# before returning any instrument.

Technical Assistance

If you are experiencing any technical problems or require any assistance with the proper operation or application of your instrument, please call, e-mail or fax our technical support team:

Chauvin Arnoux®, Inc. d.b.a. AEMC® Instruments
Phone: (800) 343-1391 (Ext. 351)
Fax: (603) 742-2346
E-mail: techsupport@aemc.com
www.aemc.com



03/24
99-MAN 100484 v02

AEMC[®] Instruments
15 Faraday Drive • Dover, NH 03820 USA
Phone: +1 (603) 749-6434 • +1 (800) 343-1391 • Fax: +1 (603) 742-2346
www.aemc.com
